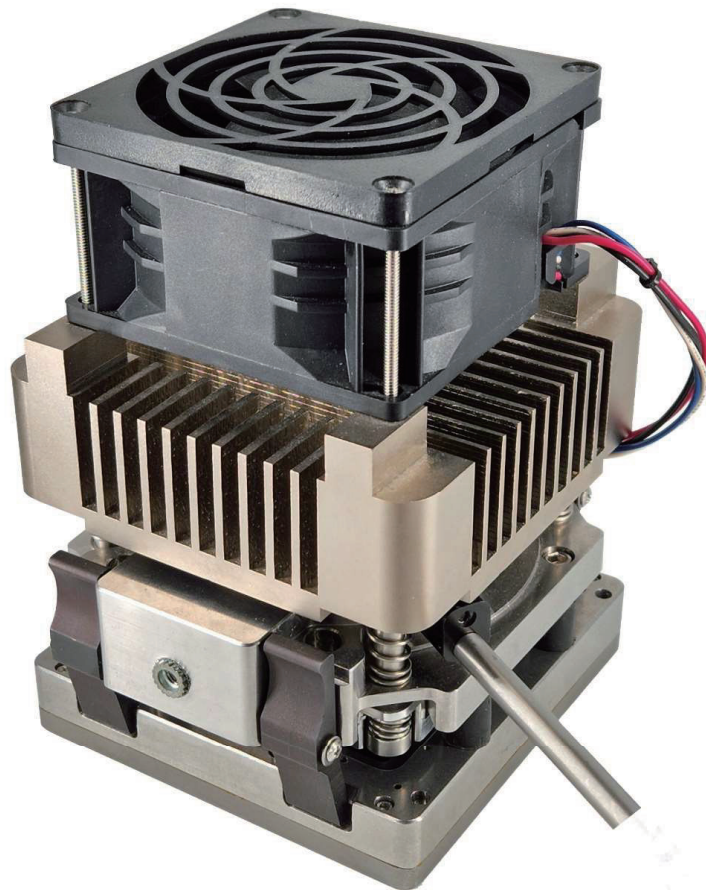
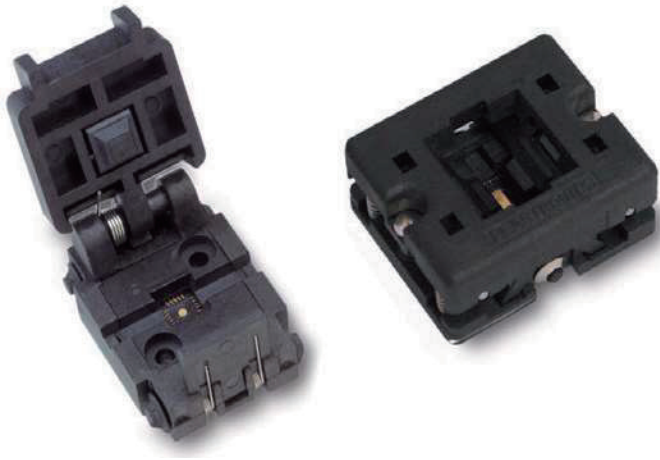


老化测试解决方案



QN系列插座

加速寿命测试(老化测试) 解决方案



在针对最新型QFN封装(如MLF、BCC和LPCC)插座解决方案的设计和开发方面,史密斯英特康的产品引领市场。这些插座在小尺寸外形的条件下实现了模块化设计理念,而且电感非常低。

与带盖插座相比,在相同引脚数量条件下,新型开顶式QFN插座能更方便地装载和卸载封装。

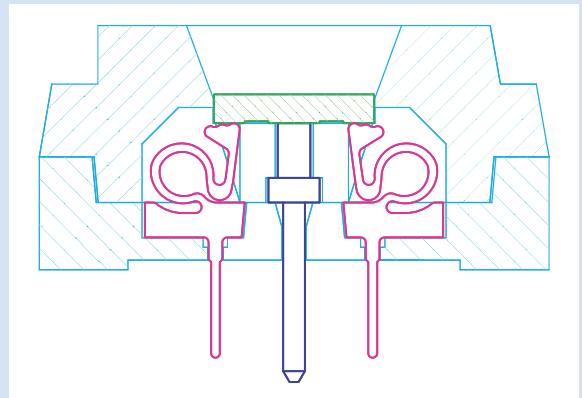
该系列老化测试插座适用于下一代集成电路封装的高可靠性测试。

优势

- 行业认可的设计、内部工具与模具制造以及机械加工(全自动化组装)
- 丰富的组件库和可配置选择

特征

- 支持的间距类型:0.40mm、0.50mm、0.65mm、0.80mm和1.00mm
- 定制化间距可低至0.40mm
- 带盖插座与开顶式插座支持尺寸 $\leq 10\text{mm}$ 的封装
- 带盖插座支持尺寸10mm至16mm的封装
- 所有插座中心引脚接地
- 对于高功率设备,可选铜质散热柱
- 插座适用于80多种不同JEDEC标准封装



QN系列插座规格

机械特性

- 安装: 通孔
- 插座操作: 翻盖
- 运行温度: -55°C至150°C
- 接触力: 32g
- 生命周期: 5,000次机械寿命

电气特性

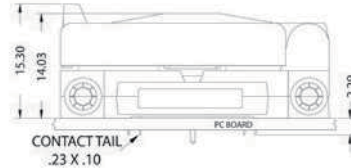
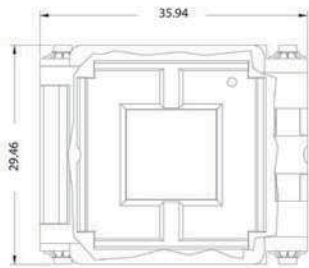
- 接触电阻: <math>< 50\text{m}\Omega</math>
- 电感: 3nH
- 额定电流: 温度升高30°C, 额定电流为0.5A; 温度升高75°C, 额定电流为1.0A
- 体积电阻率: $1 \times 10^{15} \Omega\text{-cm}$
- 绝缘电阻: 220.5 kV/cm

材料

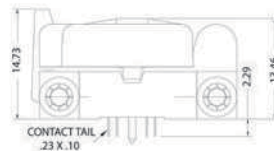
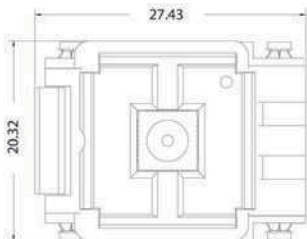
- 塑料主体: PPS
- 接触座金属: 铍铜
- 触点电镀层: 在镍层上镀金; 镍硼合金层 (可选)
- 中心引脚基体金属: 黄铜; 铜 (可选)
- 中心引脚镀层: 金
- 弹簧、扭转部件/线圈: 钝化不锈钢

Q系列插座尺寸

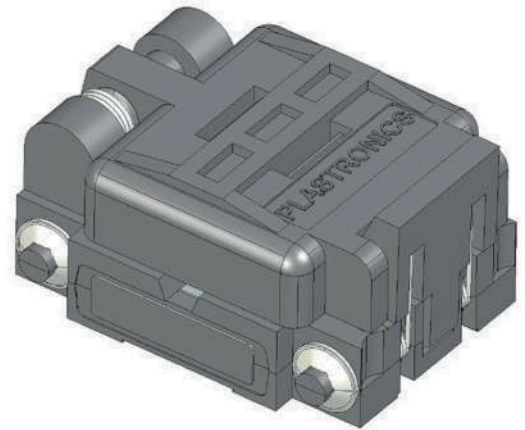
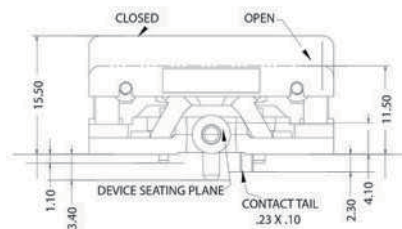
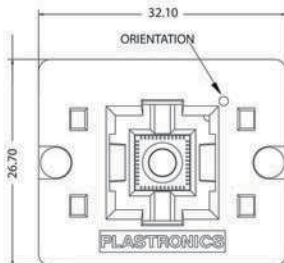
带盖插座主体尺寸 $\leq 10\text{mm}$



带盖插座主体尺寸 10mm - 16mm



开顶式插座主体尺寸 $\leq 10\text{mm}$



Worldwide Support

Connectors

Americas

Sales

connectors.uscsr@smithsinterconnect.com

Technical Support

connectors.ustechsupport@smithsinterconnect.com

Europe

Sales

connectors.emeacsr@smithsinterconnect.com

Technical Support

connectors.emeatechsupport@smithsinterconnect.com

Asia

Sales

asiacsr@smithsinterconnect.com

Technical Support

asiatechsupport@smithsinterconnect.com

Fibre Optics & RF Components

Americas

Sales

focom.uscsr@smithsinterconnect.com

Technical Support

focom.techsupport@smithsinterconnect.com

Europe

Sales

focom.emeacsr@smithsinterconnect.com

Technical Support

focom.techsupport@smithsinterconnect.com

Asia

Sales

focom.asiacsr@smithsinterconnect.com

Technical Support

focom.techsupport@smithsinterconnect.com

Semiconductor Test

Americas

Sales

semi.uscsr@smithsinterconnect.com

Technical Support

semi.techsupport@smithsinterconnect.com

Europe

Sales

semi.emeacsr@smithsinterconnect.com

Technical Support

semi.techsupport@smithsinterconnect.com

Asia

Sales

semi.asiacsr@smithsinterconnect.com

Technical Support

semi.techsupport@smithsinterconnect.com

RF/MW Subsystems

Americas, Europe & Asia

Sales

subsystems.csr@smithsinterconnect.com

Technical Support

subsystems.techsupport@smithsinterconnect.com

Connecting Global Markets

more > [smithsinterconnect.com](https://www.smithsinterconnect.com) | [in](#) [🐦](#)

Copyright© 2024 Smiths Interconnect | All rights reserved | Version 1.0

The information contained within this document is subject at all times to applicable Export Control regulations and legal requirements.