

RESISTOR

CVD DIAMOND CHIP 20 WATTS



DATA SHEET

PART SERIES: CR0402D

SHEET 1 OF 2
Dwg 1011115

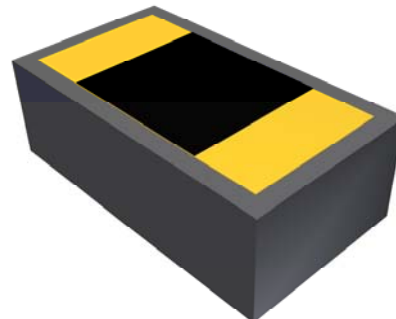
EN 13-3904
Revision -

FEATURES

- Small Size - Light Weight
- Highest Thermal Performance Possible
- Excellent Peak Power Capability
- Rugged Passivated TaN Film
- Moisture Resistant
- Pure Gold Input Pads
- Wire Bondable or Solderable
- High Power

APPLICATIONS

- Broadcast
- Higher Power Filters
- High Power Amplifiers
- Instrumentation
- Isolators
- Military
- Satellite Communications
- Phased Array Radar



GENERAL DESCRIPTION

CVD Diamond Chip Resistors offer extremely high power ratings and smallest size watt-per-watt of any resistor configuration on the planet. These resistors may be used in applications up to 30 GHz and are ideal for military and space applications because of their high power capability, broad frequency response and small, light-weight size. These resistors are processed using all thin film construction and have pure thin film gold terminals that are both wire bondable and solderable. They are ideal for peak power applications. High reliability tested versions per MIL-PRF-55342 are also available. Select from tape and reel or waffle packaging. These products are S-level approved. They also meet NASA out-gassing requirements for space applications.

ORDERING INFORMATION

Part Identifier:

CR0402D **X**, 5
└── Resistance

SPECIFICATIONS

1.0 ELECTRICAL

Resistance:	50 Ω & 100 Ω , \pm 5%
Frequency Range:	DC – 30 GHz
Capacitance:	0.09 pF Typical
Input Power CW:	20 Watts
Peak Power:	200 Watts (1 μ s pulse width/1% duty cycle)

2.0 ENVIRONMENTAL

Operating Temperature:	-55°C to +150°C
Storage Temperature:	-55°C to +150°C

3.0 MARKING

Unit Marking:	None
---------------	------

4.0 QUALITY ASSURANCE

Sample Inspect Per MIL-STD-105, Level II, 1.0% AQL.
Visual and Mechanical Inspection for Conformance to Outline Drawing
Measure DC Resistance
Data Retention - Standard

5.0 PACKAGING

Standard:	Waffle Packaging
Optional:	Tape and Reel

RESISTOR

CVD DIAMOND CHIP 20 WATTS



DATA SHEET

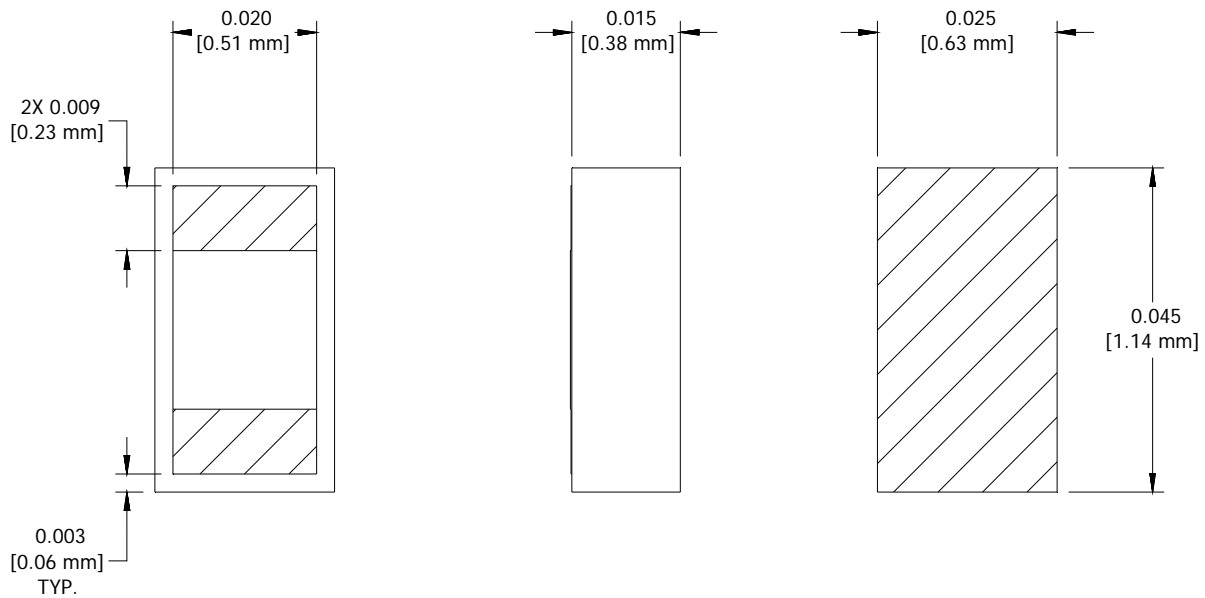
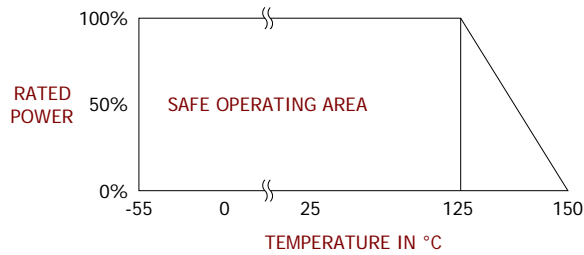
PART SERIES: CR0402D

SHEET 2 OF 2
Dwg 1011115

EN 13-3904
Revision -

6.0 MECHANICAL

Substrate Material:	CVD Diamond
Resistive Element:	Thin Film
Terminal:	Gold over Nickel
Ground Plane Material:	Gold over Platinum
Metric Dimensions:	Provided for reference only



Unless Otherwise Specified: TOLERANCE: X.XX = ± 0.01 X.XXX = ± 0.005